

DEPARTMENT OF SURGICAL ONCOLOGY

Endoscopy Unit

Introduction

Endoscopy unit at BP Koirala Memorial Cancer Hospital deals with diagnostic and therapeutic endoscopic procedures in suspected or diagnosed cancer patients. Besides, ECG and spirometry are also carried out routinely.

Manpower:

Doctors from medical and surgical oncology perform the various endoscopic procedures. Besides, there are two nurses and one attendant.



Services:

1. Diagnostic :

- a. Videoscopic Flexible Nasopharyngolaryngoscopy
- b. Videoscopic Flexible Bronchoscopy
- c. Videoscopic Flexible Esophagogastroduodenoscopy
- d. Videoscopic Flexible Enteroscopy
- e. Videoscopic Flexible Colonoscopy
- f. Videoscopic Flexible Cystoscopy
- g. Videoscopic Flexible Hysteroscopy
- h. Rigid Sigmoidoscopy



2. Therapeutic:

- a. Tracheobronchial suctioning in ICU/ critically ill and needed patients
- b. Endoscopy guided Nasogastric tube placement for grade IV dysphagia in patients with esophageal cancer
- c. Esophageal dilatation
- d. Esophageal variceal sclerotherapy/ banding
- e. Endoscopic polypectomy (upper GI and lower GI tract)
- f. Endoscopy guided guidewire placement for endoluminal brachytherapy in esophageal and pulmonary cancer

An overview of services provided by endoscopic unit in year 2009 has been shown in tables 1 and 2, and figure 1 and 2.

Endoscopic Services

Endoscopic Services	Male	Female	Total
Bronchoscopy	462	379	841
Oesophagogastroduodenoscopy	437	449	886
NPL	799	616	1415
Cystoscopy	78	441	519
Sigmoidoscopy	67	64	131
Colonoscopy	86	79	165
Oesophageal Dilatation	3	7	10
Endoscopy guided NG insertion	6	3	9
Oesophageal variceal binding	1	2	3
Polypectomy	0	1	1
Enteroscopy	1	0	1

Figure 1

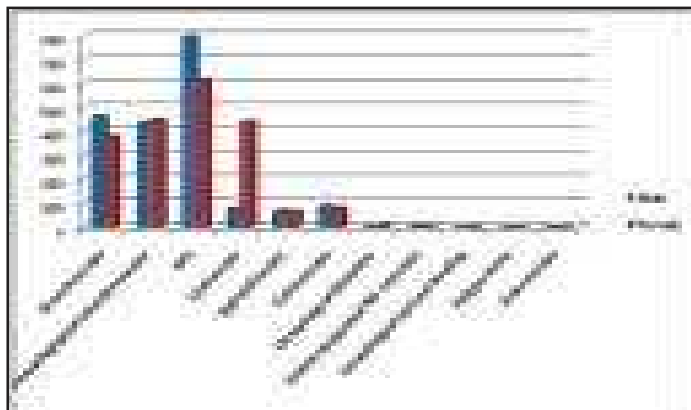
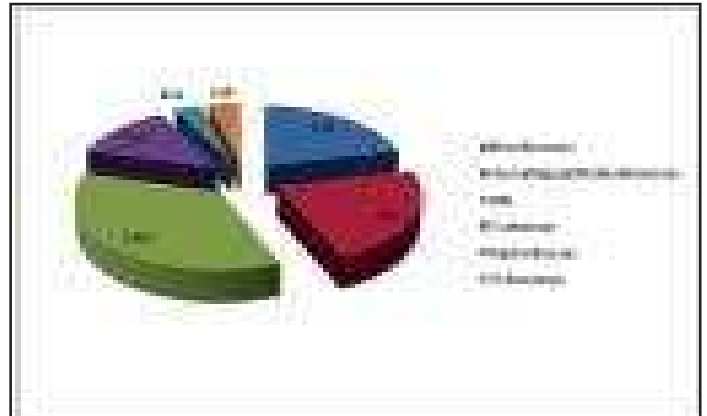


Figure 2



ECG and PFT

Procedure	Male	Female	Total
ECG	775	991	1766
PFT	36	21	57

New services:

In year 2010, we have given the continuity to esophageal variceal banding, esophageal dilatation with nasogastric tube insertion prior to chemoradiation for patients with grade IV dysphagia due to esophageal cancer, endoscopic polypectomy (upper GI and lower GI tract). In selected cases, we routinely insert bronchoscopy guided guidewire for brachytherapy of lung cancer.

Future plans:

In coming years, we are planning to start the following services:

1. ERCP and biliary stenting
2. Intralesional treatment for palliation of obstruction due to locally advanced tumors of esophagus and lung
3. Endoscopic ultrasound